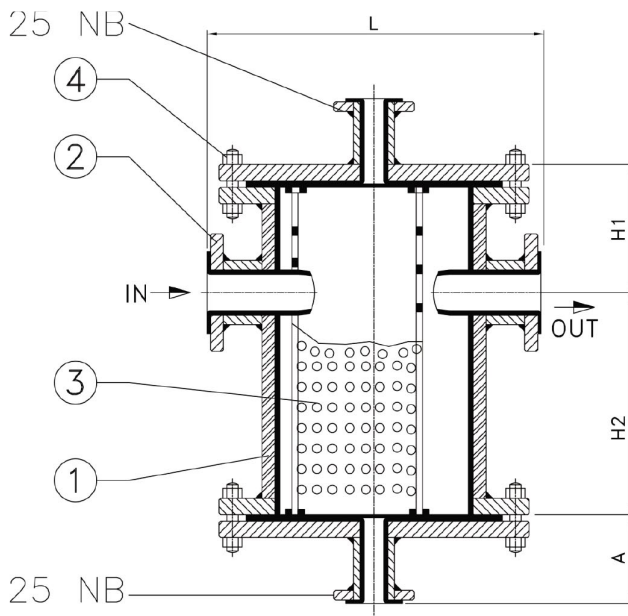


# SBLV Series - Lined Filter Strainer - Basket Type

Schematic Representation Only



No.	Description	Moc
1	Body Shell	ASTM A106 Gr.B (Sch-40) (FEP Lined) †
2	End Cover	I.S.2062 (FEP Lined) †
3	Filter Element	PTFE / FEP
4	Stud & Nuts	S.S.

† Standard Scope of Supply



## Body Material Options :

- ASTM A106 Gr.B (SCH-40)

## Flange Material :

- ASTM A105
- IS 2062

## Technical Specifications :

- Flange : As per ANSI B16.5
- Drilling : ASA #150 / DIN 2632/33 / BS 10 TABLE D, E, F
- Lining Thickness : 3 to 5 mm

## Dimensional Data :

ANSI #150 FLANGED RF	SIZE (mm)	L* (mm)	H1* (mm)	H2* (mm)	A*
	DN25-1"	178	100	150	100
	DN40-1 1/2"	204	100	170	100
	DN50-2"	230	100	200	100
	DN65-2 1/2"	290	120	200	100
	DN80-3"	310	130	200	100
	DN100-4"	375	180	250	100
	DN150-6"	430	210	300	100

\*# As per Manufacturer's Standard

## Lining Material Options :

- TEFLON® PFA - ASTM D 3307
- TEFLON® FEP - ASTM D 2116

## Test & Inspection Data :

- Hydraulic Test # : Body (Shell) - 2.0 Kg/Cm<sup>2</sup>
- Spark Test : 15 K.V. D.C

## Optional Design / Components :

- 'Y' TYPE STRAINER WITH DRAIN PL UG
- 'Y' TYPE STRAINER WITH DRAIN BALL V ALVE
- 'T' TYPE STRAINER

Technical Information subject to change without notice

# How to Order - SBLV Series

## How to Order:

Series	Material					Features					
Number	Body	Trim	Body & Trim Liner	Seats	Ends	Class	Size	Operation			
SBLV	2 WCB	2 WCB	A PFA	NONE	F FLANGED RF	0 ANSI 150#	01 1"	NONE			
	3 CF8M	3 316SS	F FEP				01.25 1-1/4"				
	4 CF8	4 304SS	E ETFE				01.5 1-1/2"				
	6 DI / CI		K KYNAR				02 2"				
							02.5 2-1/2"				
							03 3"				
							04 4"				
							06 6"				

Lined Filter Strainer (Basket Type), Body DI + PFA Liner, Trim 304 + PFA Liner, Flanged RF ANSI Class 150# Size 6"

**SBLV-24AP-F006L**

