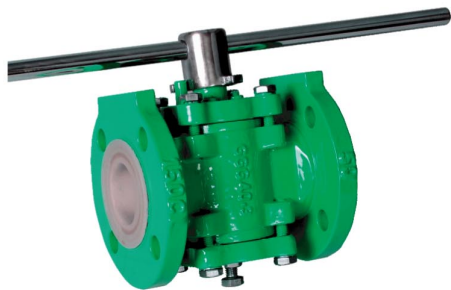
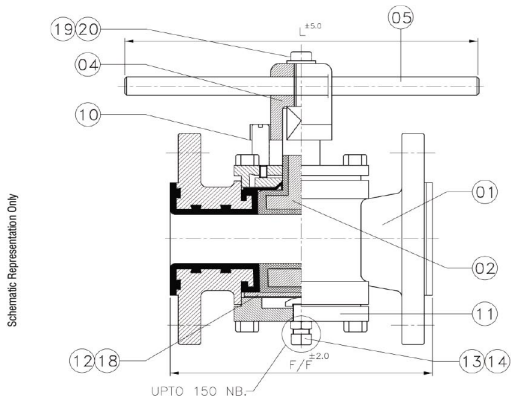


10LB Series - Lined Plug Valve (Non Jacketed)



No.	Description	Moc
1	Body With Lining	Ductile Iron GGG40.3 / ASTM A216 Gr.WCB (FEP Lined)†
2	Lined Plug	Ductile Iron / WCB (FEP Lined) †
3	Top Cover	Ductile Iron / WCB
4	Lever Boss	ASTM A216 Gr.WCB
5	Lever Rod	M.S
6	Wedge Ring	PTFE
7	Diaphragm	PTFE
8	Diaphragm Backup	S.S.
9	Thrust Washer	S.S.
10	Stopper Pin	WCB/S.S.
11	Bottom Cover	Ductile Iron/WCB
12	Blind Gasket	PTFE
13	Pusher Bolt	S.S.
14	Pusher Nut	S.S.
15	Grub Screw	S.S.
16	Hex Head Bolt	S.S.
17	Hex Head Bolt Washer	S.S.
18	Blind Gasket Backup	S.S.
19	L.boss Bolt & Washer	S.S.

† Standard Scope of Supply

Body Material Options :

- Ductile Iron GGG40.3 / ASTM A395
- Cast Steel ASTM A216 Gr.WCB
- ASTM A351 Gr. CF8 / S.S.304
- ASTM A351 Gr. CF8M / S.S.316

Lining Material Options :

- TEFLON® PFA – ASTM D 3307
- TEFLON® FEP – ASTM D 2116
- TEFLON® (ETFE) – ASTM D 3159
- KYNAR® (PVDF) – ASTM D 3322

Technical Specifications :

- Design Standard : BS 5158:1989
- Flange : As per ANSI B16.5 / B16.42
- Drilling : ASA #150 / DIN 2632/33 / BS 10 TABLE D, E, F
- Lining Thickness : 3 to 5 mm
- Testing Standard : BS EN 12266-1&2 (2003)

Salient Features :

- Cavity Less High Performance Design
- Zero Leakage (Class VI Leakage Rate) due to large sealing area
- Unique Lining makes it Fully Locked from Top, Bottom & Port.
- Totally Maintenance Free Design.

Dimensional Data :

ANSI #150 FLANGED RF	SIZE	L ^s (mm)	L1 (mm)	Torque N.m)
	DN15-1/2"	108	270	30
	DN20-3/4"	118	270	30
	DN25-1"	127	270	40
	DN40-1 1/2"	165	320	60
	DN50-2"	178	470	75
	DN80-3"	203	478	140
	DN100-4"	229	630	210
	DN150-6"	267	G.BOX	550
	DN200-8"	360	G.BOX	1500
DN250-10"	360	G.BOX	1500	

* As per BS EN 558 – 2 Table 6, Series-3.

Testing in accordance with BS EN 12266-1(2003) Table A.3

Test & Inspection Data :

- Hydraulic Test # : Body (Shell) - 20 Kg/Cm²
Seat - 10 Kg/Cm²
- Pneumatic Test # : Seat - 6 Kg/Cm²
- Spark Test : 15 K.V. D.C

Optional Design/Components :

- Anti-static Clip
- Gear Box
- Pneumatic Actuator
- Jacketed Plug Valve Design
- Sleeved Plug Valve Design

Technical Information subject to change without notice

How to Order - 10LB Series

How to Order:

Series	Material					Features			
Number	Body	Plug	Body & Trim Liner	Seats	Ends	Class	Size	Operation	
10LB	2 WCB	2 WCB	A PFA	A PFA	F FLANGED RF	0 ANSI 150#	0.5 1/2"	L Manual Lever Operator	
	3 CF8M	3 316SS	F FEP	F FEP			0.75 3/4"	G Gear Operator	
	4 CF8	4 304SS	E ETFE	P PTFE			01 1"	B Bare Shaft	
	6 DI / CI	7 MONEL	K KYNAR				01.25 1-1/4"	P Pneumatic Actuator	
	8 ALLOY 20	8 ALLOY 20					01.5 1-1/2"	E Electric Actuator	
	9 HASTELLOY	9 HASTELLOY					02 2"	X Stem Extension w/Lever	
							02.5 2-1/2"		
							03 3"		
							04 4"		
							05 5"		
							06 6"		
							08 8"		
							10 10"		

Lined Plug Valve, Body DI + PFA Liner, Trim 304 + PFA Liner, Seat FEP, Flanged RF
ANSI Class 150# Size 6" with Lever

10LB-64AF-F006L

