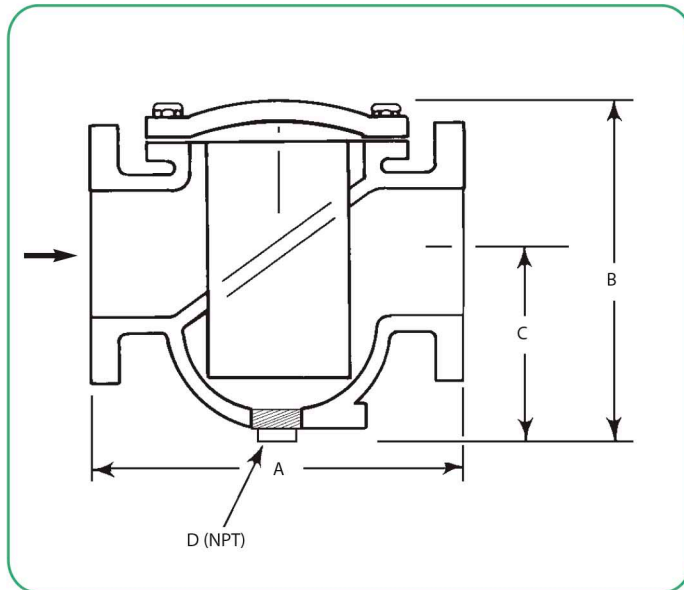


# FILTERS

## BASKET STRAINERS

### FEATURES

- MAX SATURATED STEAM PRESS: 203 PSIG (150#) 604 PSIG (300#)
- STANDARD SCREEN:  
LIQUID: 1 1/2" TO 4": 0.063 PERF, 6" AND UP: 0.125 PERF  
STEAM: 1 1/2" TO 8": 0.045 PERF, 10" TO 16": 0.125 PER
- MAX ALLOWABLE PRESSURE:  
150#: 285PSIG@.20 TO 100°F  
300#: 740PSIG@.20 TO 100°F
- MAX ALLOWABLE TEMPERATURE:  
150#: 750°F@95PSIG  
300#: 750PSIG@505PSIG



### MATERIAL LIST

No.	Part	Material
1	Body	CI, WCB, SS304 & SS316
2	Cover	CI, WCB, SS304 & SS316
3	Cover Gasket	Non Asbestos
4	Strainer Screen	SS 304
5	Cover Studs Nut	A93 GR B7, 2H A93 GR B7, 2H

### DIMENSION (INCHES)

Size	ANSI 150	ANSI 300	B	C	NPT D	WEIGHT		Cv
	A	A				ANSI 150	ANSI 300	
1-1/2"	6.5	7.0	8.13	4.13	1/2	23	23.3	25
2"	8.5	8.5	10.63	5.88	1/2	34	34.3	45
2-1/2"	8.0	8.69	9.69	5.44	3/4	34	39.8	90
3"	8.75	9.56	10.75	5.3	3/4	46	54	130
4"	11.19	11.75	13.88	7.88	1	70	86	290
6"	13.88	14.75	18.3	12.5	1-1/4	168	196	800
8"	17.38	18.13	22.43	15.13	1-1/2	234	292	1500
10"	21.63	22.88	26.38	16.0	1-1/2	402	460	3200
12"	25.0	25.38	36.13	25.0	2	692	790	5000
14"	47.1	47.1	54.6	34.4	2	1550	1650	7600
16"	47.1	47.1	54.6	34.4	2	1600	1900	



# FILTERS

## BASKET STRAINERS

### HOW TO ORDER

VALVE BODY DESIGN (SERIES)		MESH & PERFORATIONS	MATERIAL			ENDS	CLASS	SIZE
			BODY	SCREEN	GASKET			
<b>81S</b>	Single Basket Strainer	<b>A</b> MESH 20 = 52% Open Area, .014 wire diam.	<b>1</b> BRONZE	<b>2</b> A216 WCB	<b>P</b> PTFE	<b>F</b> FLANGED RF	<b>0</b> ANSI 150#	<b>0.25</b> 1 1/4"
	<b>81D</b>	Double Basket Strainer	<b>B</b> MESH 30 = 41% Open Area, .012 wire diam.	<b>2</b> WCB	<b>3</b> 316SS		<b>G</b> GRAPHITE	<b>3</b> ANSI 300#
<b>C</b> MESH 40 = 36% Open Area, .010 wire diam.			<b>3</b> CF8M	<b>4</b> 304SS		<b>7</b> ANSI 125#	<b>0.5</b> 1/2"	
<b>D</b> MESH 60 = 30.5% Open Area, .0075 wire diam.			<b>4</b> CF8			<b>6</b> ANSI 600#	<b>0.75</b> 3/4"	
<b>E</b> MESH 80 = 31.4% Open Area, .0055 wire diam.			<b>6</b> CI			<b>9</b> ANSI 900#	<b>01</b> 1"	
<b>F</b> MESH 100 = 30.3% Open Area, .0045 wire						<b>1</b> ANSI 1500#	<b>01.25</b> 1 1/4"	
<b>T</b> 1/32" diam. 324 holes/sq in 28% Open Area							<b>01.5</b> 1 1/2"	
<b>U</b> 3/64" diam. 225 holes/sq in 36% Open Area							<b>02</b> 2"	
<b>V</b> 1/16" diam. 132 holes/sq in 37% Open Area							<b>02.5</b> 2 1/2"	
<b>W</b> 1/10" diam. 49 holes/sq in 39% Open Area							<b>03</b> 3"	
<b>X</b> 1/8" diam. 32 holes/sq in 40% Open Area							<b>03</b> 3"	
<b>Z</b> 5/32" diam. 33 holes/sq in 62% Open Area					<b>04</b> 4"			
						<b>05</b> 5"		
						<b>06</b> 6"		
						<b>08</b> 8"		
						<b>10</b> 10"		
						<b>12</b> 12"		
						<b>14</b> 14"		
						<b>16</b> 16"		
						<b>18</b> 18"		
						<b>20</b> 20"		
						<b>24</b> 24"		

Example

SINGLE BASKET FILTER, BODY CI, SCREEN 304SS, MESH 20, PTFE GASKET, FLANGED ANSI CLASS 150#, SIZE 6".

**81SA-64P-F006**

