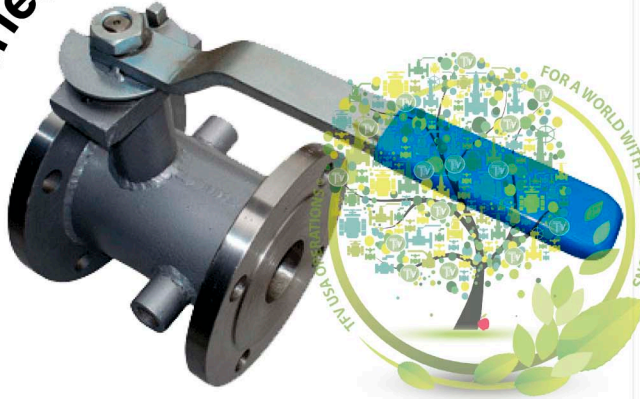


# BALL VALVES

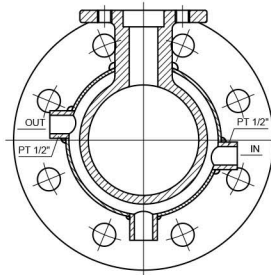
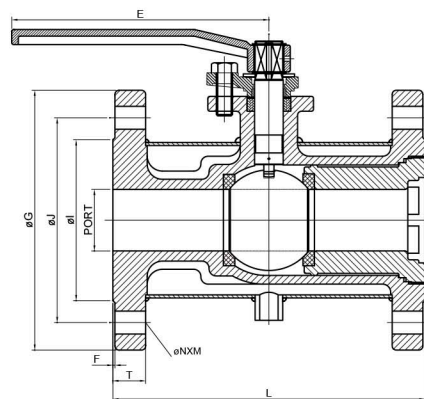
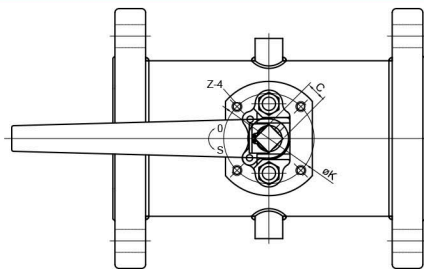
## STEAM JACKET BALL VALVES ANSI CLASS 150#

**Series 1EFJ**



### FEATURES

- THE ID FOR THE VALVE FLOW PATH (BALL, SEAT, ENDS) ARE THE SAME
- INVESTMENT CAST COMPONENT
- BLOW-OUT PROOF STEM DESIGN, ANTISTATIC DEVICE.
- TWO POSITION LOCKING DEVICE
- FOUR POINT ISO 5211 MOUNTING PAD BOLT CIRCLE
- CAST BOSSES FOR BLEED / DRAIN PORT
- AVAILABLE CARBON OR STAINLESS STEEL BODY CONSTRUCTION
- ASME B16.34 MSS-SP-55 API 598 ASME B16.10 MSS-SP-61 ASME B16.6 MSS-SP-72
- DESIGN ACCORDING TO ASME B16.34
- PRESSURE-TEMPERATURE RATING: ASME B16.34
- FACE TO FACE: ASME B16.10 CLASS 150
- FLANGE DIMENSION: ASME B16.5 RF, FINISH 125-250 AARH
- PRESSURE TESTING ACCORDING TO API 598



### MATERIAL LIST

| NO.  | PARTNAME        | MATERIAL            |
|------|-----------------|---------------------|
| 1    | BODY            | ASTM A351 Gr. CF8M  |
| 4    | BALL            | ASTM A351 Gr. CF8M  |
| 5    | STEM            | ASTM A276 Gr.316    |
| 9    | END CAP         | ASTM A351 Gr. CF8M  |
| 11   | BODY SEAL       | GRAPHITE            |
| 12   | SEAT            | PTFE+15%G.F.        |
| 14   | STEM PACKING    | GRAPHITE            |
| 15   | GLAND           | ASTM A351 Gr.CF8    |
| 15-1 | GLAND WASHER    | PTFE.               |
| 15-2 | GLAND BUSHING   | PTFE.               |
| 19   | HANDLE          | ASTM A536 Gr. FCD45 |
| 28   | STOP PLATE      | ASTM A210 Gr. 304   |
| 41   | SNAP RING       | ASTM A276 Gr.304    |
| 42   | BOLT            | ASTM A276 Gr. 304   |
| 56   | STEM BUSHING    | PEEK.               |
| 70   | SHELL OF JACKET | ASTM A240 Gr. 304   |

### DIMENSION (INCHES)

| SIZE   | PORT   | L     |       | E     | C    | ØG    |       | ØJ   |       | ØI   | T    |      | F    | ØN-M  |        | ØK   | Z        |
|--------|--------|-------|-------|-------|------|-------|-------|------|-------|------|------|------|------|-------|--------|------|----------|
|        |        | 150#  | 300#  |       |      | 150#  | 300#  | 150# | 300#  |      | 150# | 300# |      | 150#  | 300#   |      |          |
| 1 1/2" | 1/2"   | 6.50  | 7.50  | 5.16  | 0.43 | 5.00  | 6.12  | 3.88 | 4.50  | 3.03 | 0.56 | 0.81 | 0.08 | 5/8-4 | 7/8-4  | 1.97 | 1/4" 20  |
| 1 1/2" | 3/4"   | 6.50  | 7.50  | 5.16  | 0.43 | 5.00  | 6.12  | 3.88 | 4.50  | 3.03 | 0.56 | 0.81 | 0.08 | 5/8-4 | 7/8-4  | 1.97 | 1/4" 20  |
| 2"     | 1"     | 7.00  | 8.50  | 6.50  | 0.55 | 6.00  | 6.50  | 4.75 | 4.75  | 3.72 | 0.62 | 0.88 | 0.08 | 3/4-4 | 3/4-8  | 2.76 | 5/16"-18 |
| 3"     | 1 1/2" | 8.00  | 11.10 | 7.95  | 0.67 | 7.50  | 8.25  | 6.00 | 6.62  | 5.00 | 0.75 | 1.12 | 0.08 | 3/4-4 | 7/8-8  | 4.02 | 3/8"-16  |
| 3"     | 2"     | 8.00  | 11.10 | 7.95  | 0.67 | 7.50  | 8.25  | 6.00 | 6.62  | 5.00 | 0.75 | 1.12 | 0.08 | 3/4-4 | 7/8-8  | 4.02 | 3/8"-16  |
| 4"     | 2"     | 9.00  | 12.01 | 7.95  | 0.67 | 9.00  | 10.00 | 7.50 | 7.88  | 6.19 | 0.94 | 1.26 | 0.08 | 3/4-8 | 7/8-8  | 4.02 | 3/8"-16  |
| 4"     | 2 1/2" | 9.00  | 12.01 | 7.95  | 0.67 | 9.00  | 10.00 | 7.50 | 7.88  | 6.19 | 0.94 | 1.26 | 0.08 | 3/4-8 | 7/8-8  | 4.02 | 3/8"-16  |
| 5"     | 3"     | 10.00 |       | 29.63 | 1.06 | 10.00 |       | 8.50 |       | 7.31 | 0.94 |      | 0.08 | 7/8-8 |        | 4.92 | 1/2"13   |
| 6"     | 3"     | 10.55 | 15.87 | 29.63 | 1.06 | 11.00 | 12.50 | 9.51 | 10.62 | 8.50 | 1.00 | 1.44 | 0.08 | 7/8-8 | 7/8-12 | 4.92 | 1/2"13   |
| 6"     | 4"     | 10.55 | 15.87 | 29.63 | 1.06 | 11.00 | 12.50 | 9.51 | 10.62 | 8.50 | 1.00 | 1.44 | 0.08 | 7/8-8 | 7/8-12 | 4.92 | 1/2"13   |



# BALL VALVES

## STEAM JACKET BALL VALVES ANSI CLASS 150#

### HOW TO ORDER

| SERIES            |                | MATERIAL                      |                |                             | ENDS                | CLASS              | SIZE   |  | OPERATION |  |
|-------------------|----------------|-------------------------------|----------------|-----------------------------|---------------------|--------------------|--|--|-----------|--|
| VALVE BODY DESIGN | FEATURES       | BODY                          | TRIM           | SEAT                        |                     |                    |  |  |           |  |
| <b>1E</b>         | Full Pprt 1 pc | <b>2</b> WCB<br><b>3</b> CF8M | <b>3</b> 316SS | <b>C</b> Carbon filled PTFE | <b>F</b> Flanged RF | <b>0</b> ANSI 150# | <b>0.5</b> 1/2"<br><b>0.75</b> 3/4"<br><b>01</b> 1"<br><b>01.25</b> 1 1/4"<br><b>01.5</b> 1 1/2"<br><b>02</b> 2"<br><b>02.5</b> 2 1/2"<br><b>03</b> 3"<br><b>04</b> 4"<br><b>06</b> 6" | <b>L</b> Manual lever Operator<br><b>B</b> Bare Shaft<br><b>P</b> Pneumatic Actuator<br><b>E</b> Electric Actuator |           |  |

#### Example

Full Jacketed 1 Pc Port Ball Valve, Body & Trim 316SS, Seats: PTFE, Ends: Flanged, ANSI Class 150#, Size 1/2" with Lever.

**1EFJ-33P-F00.5L**

