

GATE VALVES

FORGED STEEL GATE VALVES

Series 52



FEATURES

- OS&Y
- SOLID WEDGE DESIGN
- RENEWABLE WELDED SEAT RINGS
- SIZE 1/4" TO 2" CLASS 800 TO 2500
- BASIC DESIGN API 602 & ANSI B16.34
- SOCKET WELD END DIMENSIONS: ANSI B16.11
- THREADED END DIMENSIONS: ANSI B1.20.1
- BUTT-WELD END DIMENSION ANSI B16.25
- INSPECTION & TESTING API 598
- WELDED AND BOLTED BONNET
- FLANGED ANSI B16.5

TRIM MATERIAL

API Trim No	Nonimal Trim	Stem	Disc/Wedge	Seat	Min Hardness (Brinell)
1	F6	410 (13Cr)	F6 (13Cr)	410 (13Cr)	250
2	304	304 (18Cr-8Ni)	304 (18Cr-8Ni)	304 (18Cr-8Ni)	not specified
3	-	(25Cr-20Ni)	310 (25Cr-20Ni)	310 (25Cr-20Ni)	not specified
4	-	410 (13Cr)	F6 (13Cr)	F6 (13Cr)	750
5	Hardfaced	410 (13Cr)	F6 + St Gr6 (CoCr Alloy)	410+St Gr6 (CoCr Alloy)	350
5A	-	410 (13Cr)	F6 + Hardf. NiCr Alloy	410 Hardf. NiCr Alloy	350
6	-	410 (13Cr)	F6 (13Cr)	Monel (NiCu Alloy)	250/175
7	-	410 (13Cr)	F6 (13Cr)	F6 (13Cr)	250/750
8	F6 and Hardfaced	410 (13Cr)	F6 (13Cr)	410+St Gr6 (CoCr Alloy)	250/350
8A	-	410 (13Cr)	F6 (13Cr)	410 Hardf. NiCr Alloy	250/350
9	Monel	Monel (NiCu Alloy)	Monel (NiCu Alloy)	Monel (NiCu Alloy)	not specified
10	316	316 (18Cr-8Ni-Mo)	316 (18Cr-8Ni-Mo)	316 (18Cr-8Ni-Mo)	not specified
11	Monel and Hardfaced	Monel (NiCu Alloy)	Monel (NiCu Alloy)	Monel St Gr6	350
11A	-	Monel (NiCu Alloy)	Monel (NiCu Alloy)	Monel Hardif. NiCr	350
12	316 and Hardfaced	316 (18Cr-8Ni-Mo)	316 (18Cr-8Ni-Mo)	316 + St. Gr6	350
12A	-	316 (18Cr-8Ni-Mo)	316 (18Cr-8Ni-Mo)	316 Hardf. NiCr Alloy	350
13	Alloy 2	Alloy 20(19Cr-29Ni)	Alloy 20(19Cr-29Ni)	Alloy 20(19Cr-29Ni)	not specified
14	Alloy 20 and Hardfaced	Alloy 20 (19Cr-29Ni)	Alloy 20 (19Cr-29Ni)	Alloy 20 St Gr6	350
14A	-	Alloy 20(19Cr-29Ni)	Alloy 20(19Cr-29Ni)	Alloy 20 Hardf. NiCr Alloy	350
15	Hardfaced (304)	304 (18Cr-8Ni)	304 + St Gr6	304 + St Gr6	350
16	Hardfaced (316)	316 HF (18Cr-8Ni-Mo)	316 + St Gr6	316 + St Gr6	350
17	Hardfaced (347)	347-HF(18Cr-10Ni-Cb)	347 + St Gr 6	347 + St Gr6	350
18	Hardfaced Alloy 20 HF	Alloy 20(19Cr-29Ni)	Alloy 20 + St Gr6	Alloy 20 + St Gr6	350
n/a	Alloy 625	Alloy 625	Alloy 625	Alloy 625	

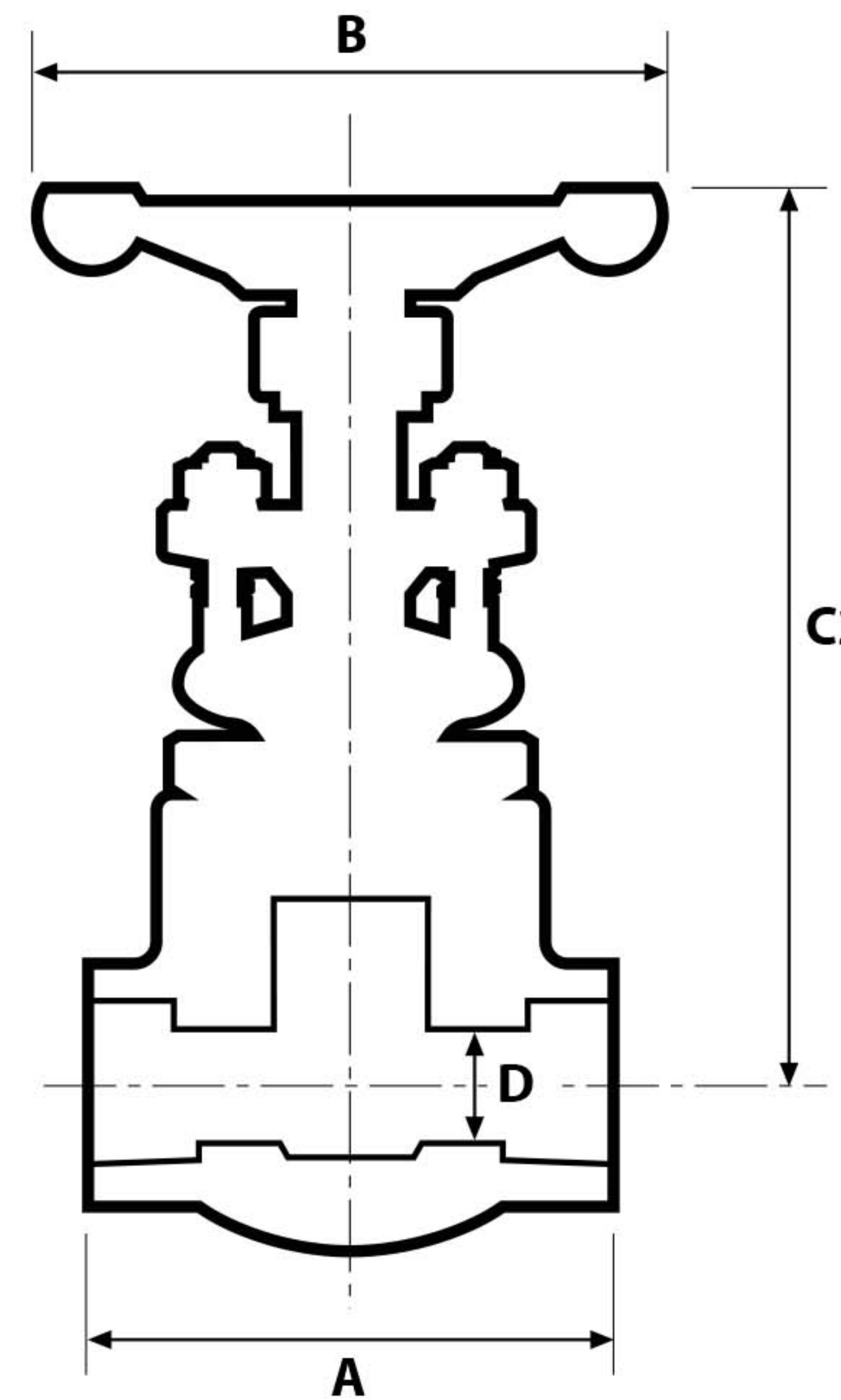
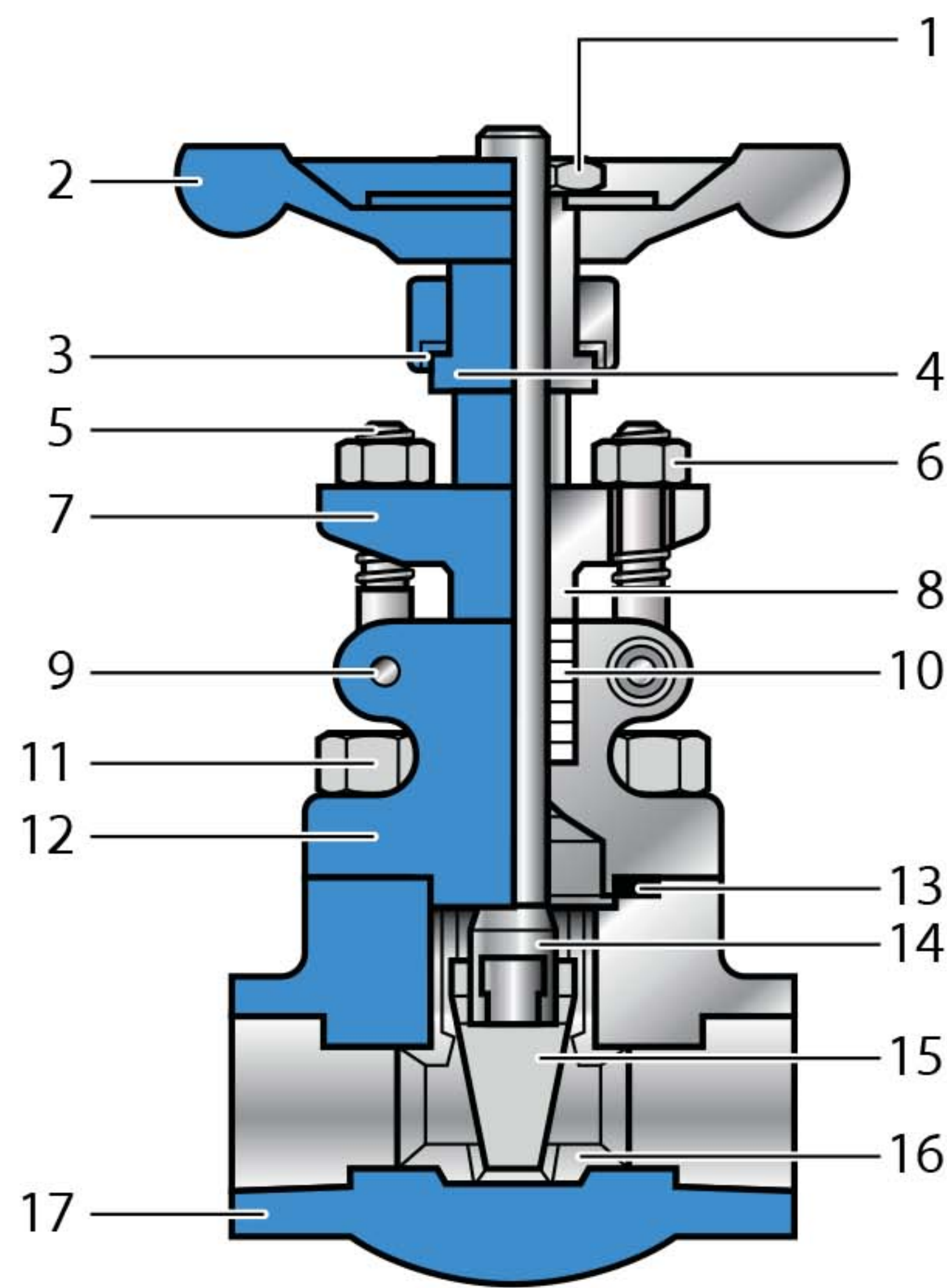
HF = STELLITE 6 (OTHER AVAILABLE UPON REQUEST)

GATE VALVES

FORGED STEEL GATE VALVES

FORGED STEEL GATE VALVES CLASS 800

3/8" - 2"



BILL OF MATERIAL

NO	NAME OF PART	MATERIAL
1	LOCK NUT	CARBON STEEL AISI 1020
2	HANDWHEEL	MALLEABLE IRON
3	WASHER	ASTM A276 430
4	STEM NUT	ASTM A276 410
5	EYE BOLT	ASTM A276 410
6	EYE BOLT NUT	ASTM A194 2H
7	GLAND FLANGE	ASTM A216 WCB
8	PACKING GLAND	ASTM A276 410
9	EYE BOLT PIN	ASTM A276 410
10	PACKING	GRAPHITE
11	BOLT	ASTM A193 B7
12	BONNET	ASTM A105 - Also available in F5, F11, F304, F316, F51, F53, F347, and F321
13	GASKET	GRAPHITE
14	STEM	ASTM A276 410
15	WEDGE	ASTM A276 420
16	SEAT RING	ASTM A276 410+HF
17	BODY	ASTM A105 - Also available in F5, F11, F304, F316, F51, F53, F347, and F321





GATE VALVES

FORGED STEEL GATE VALVES

DIMENSION (INCHES)

CLASS 800								
	1/4	3/8	1/2	3/4	1	1-1/4	1-1/2	2
A	3.14	3.14	3.54	4.33	5.00	5.00	5.00	8.26
B	3.14	3.14	3.14	4.33	4.33	5.11	5.11	7.08
C	5.86	5.86	6.41	7.00	8.26	9.56	10.3	14.3
D	0.31	0.38	0.55	0.70	0.94	1.18	1.45	1.89
WEIGHT (LBS)	3.5	3.5	4.8	7.7	11	14.3	19.8	47.3

CLASS 1500								
	1/4	3/8	1/2	3/4	1	1-1/4	1-1/2	2
A	3.54	3.54	4.33	5.00	5.00	5.00	8.26	8.26
L	3.14	3.14	4.33	4.33	5.11	5.11	7.08	7.08
H	5.70	6.29	6.89	8.26	9.45	10.2	13.9	14.1
D	0.31	0.38	0.55	0.70	0.94	1.18	1.45	1.57
WEIGHT (LBS)	4.8	4.8	8.3	12.1	14.9	20.9	49.5	48.4

CLASS 2500								
	1/4	3/8	1/2	3/4	1	1-1/4	1-1/2	2
A	-	-	5.90	5.90	8.2	-	9.2	9.25
B	-	-	5.11	5.11	9.84	-	11.8	11.8
C	-	-	11.5	11.8	15.3	-	17.1	17.1
D	-	-	0.55	0.70	0.94	-	1.45	1.45
WEIGHT (LBS)	-	-	22.0	22.7	49.3	-	83.7	83.7

CLASS 150 - 300 - 600										
		1/4	3/8	1/2	3/4	1	1-1/4	1-1/2	2	
Class 150	A	-	-	4.25	4.64	5.00	-	6.49	7.00	
Class 300	A	-	-	5.51	6.02	6.49	-	7.51	8.50	
Class 600	A	-	-	6.49	7.51	8.50	-	9.48	11.5	
Handwheel	B	-	-	3.14	3.14	4.33	-	5.11	5.11	
Center to Top Open	Class 150/300	C	-	-	6.69	7.67	7.99	-	9.56	10.3
	Class 600	C	-	-	5.82	6.41	7.00	-	9.56	10.3
Dia. of Port	D	-	-	0.38	0.55	0.70	-	1.18	1.45	
Weight	Class 150	Lb	-	-	3.8	5.7	12.5	-	21.4	29.1
	Class 300	Lb	-	-	8.6	11.0	13.6	-	26.4	36.3
	Class 600	Lb	-	-	8.8	11.4	16.5	-	33.0	45.1





GATE VALVES

tfv usaoperation

contact@tfvusao.com
www.tfvusao.com

Call free from USA and CANADA

t: 1-866-TFV-USA0 (838-8726)

FORGED STEEL GATE VALVES

HOW TO ORDER

VALVE TYPE			FEATURES	MATERIAL		ENDS	CLASS	SIZE	OPERATION						
Body Design (SERIES)	Bonnet Design	Wedge/Disc Design		BODY	TRIM (Stem/Wedge seat/seat Ring)										
52 Gate Valve OS&Y API 602	B Bolted Bonnet	S Solid Wedge	NONE	NONE	20	A105	01	13CR	F Flanged RF ⁽¹⁾	0	ANSI 150#	0.25	1/4"	H	Handwheel
			6D	API 6D	22	A350 LF2	02	304	R Flanged RTJ ⁽¹⁾	3	ANSI 300#	0.38	3/8"	G	Gear Operator
	N		NACE	23	A350 LF3	03	310	T Threaded	6	ANSI 600#	0.5	1/2"			
	ND		NACE/API 6D	24	A182 F1	05	13CR / HF / HF	S Socket Weld	8	API 800#	0.75	3/4"			
	F		Fire Safe	25	A182 F11 CL2	06	13CR / 13CR / CuNi		1	ANSI 1500#	01	1"			
	O		Oxygen Service	26	A182 F22 CL3	08	13CR / 13CR / HF	2	ANSI 2500#	01.25	1 1/4"				
	FE		Fugitive Emmisions	27	A182 F5		12		316 / 316 / HF	01.5	1 1/2"				
	BS		Bellows Seal	28	A182 F9	13	CN7M	M	2 different ends (to be specify)	02	2"				
	CR		Criogenic Service	30	A182 F316	09	Monel			B	Butt Weld	P	Pneumatic Actuator		
	FP		Full Port	31	A182 F316L	10	316	B	Bare Shaft						
FN	Full Port / NACE	32	A182 F304	11	Monel / Monel / HF										
FA	Full Port / NACE API 6D	33	A182 F304L	12	316 / 316 / HF										
FA	Fire Safe / NACE	40	Monel	13	CN7M										
		41	182 F20	14	CN7M / CN7M / HF										
		42	Hastelloy	15	A105/HF/HF										
		43	A182 F321	16	316HF / 316HF / 316HF										
		44	A182 F347	17	347HF / 347HF / 347HF										
				18	ALLOY20 / ALLOY20 / ALLOY20 HF										
				28	A182 F9 / A217 C12 / HF										

Example

Gate Valve OS&Y API 602, Bolted Bonnet, Solid Wedge, Body A105, Trim 5 (Stem 13% Cr, Wedge and Seat Harfacing Stellite), Flanged ANSI Class 150# Size 2" with Handwheel

52BS-2005-F802H

(1) Flanged Valves are flange welded (non integral body) available from 1/2" to 2"

ANSI Class 150 to 600# only

***HF = Usually Stellite 6 other available under request

