

CHECK VALVES

FORGED STEEL CHECK VALVES

Series 72



FEATURES

- OS&Y
- PISTON CHECK VALVES
- SIZE 3/8" TO 2" CLASS 800 TO 2500
- BASIC DESIGN API 602 & ANSI B16.34
- SOCKET WELD END DIMENSIONS: ANSI B16.11
- THREADED END DIMENSIONS: ANSI B1.20.1
- INSPECTION & TESTING API 598
- BUTT WELD END DIMENSIONS ANSI B16.25
- FLANGED END DIMENSIONS ANSI B16.5

TRIM MATERIAL

API Trim No	Nonimal Trim	Stem	Disc/Wedge	Seat	Min Hardness (Brinell)
1	F6	410 (13Cr)	F6 (13Cr)	410 (13Cr)	250
2	304	304 (18Cr-8Ni)	304 (18Cr-8Ni)	304 (18Cr-8Ni)	not specified
3	-	(25Cr-20Ni)	310 (25Cr-20Ni)	310 (25Cr-20Ni)	not specified
4	-	410 (13Cr)	F6 (13Cr)	F6 (13Cr)	750
5	Hardfaced	F6HF410 (13Cr)	F6 + St Gr6 (CoCr Alloy)	410 + St Gr6 (CoCr Alloy)	350
5A	-	410 (13Cr)	F6+Hardf. NiCr Alloy	410+Hardf. NiCr Alloy	350
6	-	410 (13Cr)	F6 (13CR)	Monel* (NiCu Alloy)	250/175
7	-	410 (13Cr)	F6 (13Cr)	F6 (13Cr)	250/750
8	F6 and Hardfaced	410 (13Cr)	F6 (13Cr)	410 + St Gr6 (CoCrAlloy)	250/350
8A	-	410 (13Cr)	F6 (13Cr)	410 Hardf. Nicr Alloy	250/350
9	Monel	Monel* (NiCu Alloy)	Monel* (NiCu Alloy)	Monel* (NiCu Alloy)	not specified
10	316	316 (18Cr-8Ni-Mo)	316 (18Cr-8Ni-Mo)	316 (18Cr-8Ni-Mo)	not specified
11	Monel and Hardfaced	Monel* (NiCu Alloy)	Monel* (NiCu Alloy)	Monel* St Gr6	350
11A	-	Monel* (NiCu Alloy)	Monel* (NiCu Alloy)	Monel* Hardif. NiCrA	350
12	316 and Hardfaced	316 (18Cr-8Ni-Mo)	316 (18Cr-8Ni-Mo)	316 + St. Gr6	350
12A	-	316 (18Cr-8Ni-Mo)	316 (18Cr-8Ni-Mo)	316 Hardf. NiCr Alloy	350
13	Alloy 20	Alloy 20 (19Cr-29Ni)	Alloy 20 (19Cr-29Ni)	Alloy 20 (19Cr-29Ni)	not specified
14	Alloy 20 and Hardfaced	Alloy 20 (19Cr-29Ni)	Alloy 20 (19Cr-29Ni)	Alloy 20 St Gr6	350
14A	-	Alloy 20 (19Cr-29Ni)	Alloy 20 (19Cr-29Ni)	Alloy 20 Hardf. NiCr Alloy	350
15	Hardfaced (304)	304 (18Cr-8Ni)	304 + St Gr6	304 + St Gr6	350
16	Hardfaced (316)	316 HF (18Cr-8Ni-Mo)	316 + St Gr6	316 + St Gr6	350
17	Hardfaced (347)	347 HF (18Cr-10Ni-Cb)	347 + St Gr6	347 + St Gr6	350
18	Hardfaced Alloy 20 HF	Alloy 20 (19Cr-29Ni)	Alloy 20 + St Gr6	Alloy 20 + St Gr6	350
n/a	Alloy 625	Alloy 625	Alloy 625	Alloy 625	

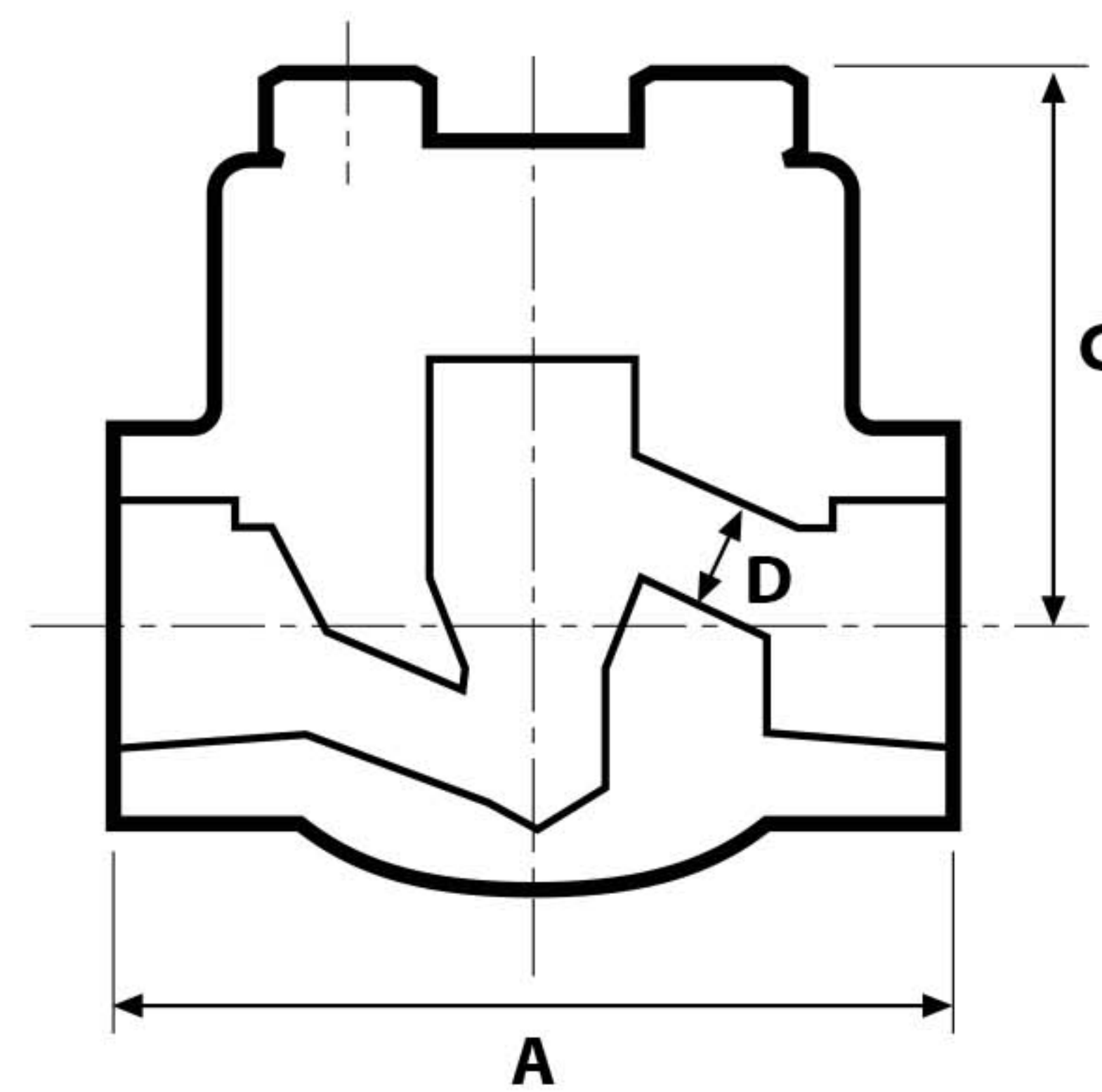
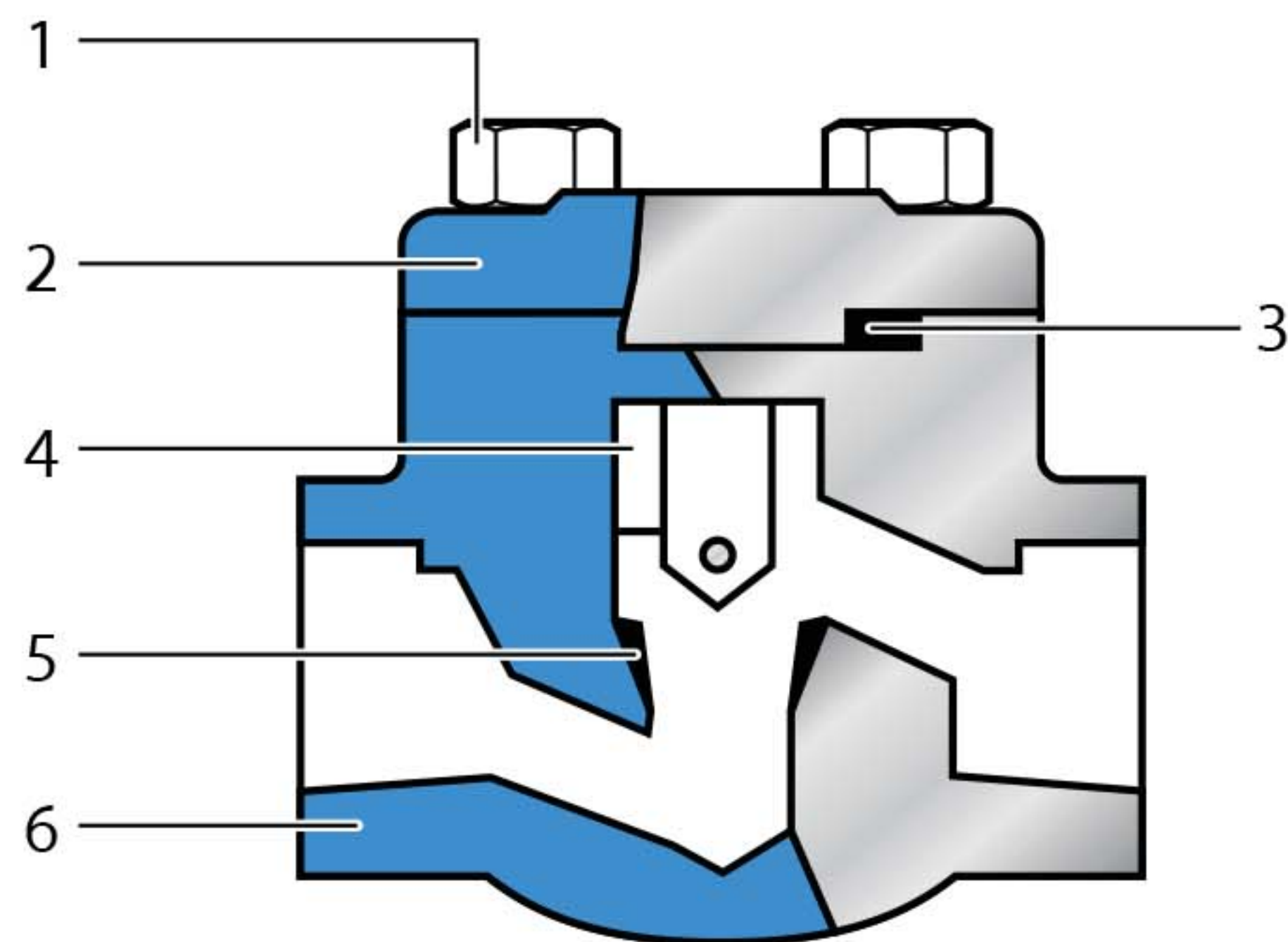
HF = STELLITE 6 (OTHER AVAILABLE UPON REQUEST)

CHECK VALVES

FORGED STEEL CHECK VALVES

FORGED STEEL PISTON CHECKVALVES CLASS 800

3/8" - 2"



BILL OF MATERIAL

NO	NAME OF PART	MATERIAL
1	BOLT	ASTM A193 B7
2	COVER	ASTM A105 - Also available in F5, F11, F304, F316, F51, F53, F347, and F321
3	GASKET	GRAPHITE
4	DISC	ASTM A276 420
5	SEAT	INTEGRAL+HF
6	BODY	ASTM A105 - Also available in F5, F11, F304, F316, F51, F53, F347, and F321





CHECK VALVES

FORGED STEEL CHECK VALVES

DIMENSION (INCHES)

CLASS 800								
	1/4	3/8	1/2	3/4	1	1-1/4	1-1/2	2
A	3.14	3.14	3.54	4.33	5.00	6.10	6.69	8.26
D	0.35	0.35	0.51	0.69	0.88	1.16	1.38	1.79
C	2.08	2.08	2.36	2.87	3.14	3.85	4.64	5.90
WEIGHT (LBS)	2.80	2.80	3.0	5.2	8.8	16.2	17.6	39.6

CLASS 1500								
	1/4	3/8	1/2	3/4	1	1-1/4	1-1/2	2
A	3.54	3.54	4.33	5.00	6.10	6.69	8.26	8.26
D	0.28	0.35	0.51	0.69	0.83	1.10	1.30	1.48
C	2.36	2.36	2.87	3.14	3.85	4.64	5.90	5.90
WEIGHT (LBS)	3.30	3.30	6.1	10.1	16.2	19.8	49.9	41.8

CLASS 2500								
	1/4	3/8	1/2	3/4	1	1-1/4	1-1/2	2
A	-	-	5.90	5.90	8.26	-	9.25	9.25
C	-	-	5.11	5.11	6.29	-	7.67	7.67
D	-	-	0.51	0.67	0.83	-	1.30	1.37
WEIGHT (LBS)	-	-	15.4	14.9	38.5	-	63.8	63.8

CLASS 150 - 300 - 600										
			1/4	3/8	1/2	3/4	1	1-1/4	1-1/2	2
Class 150	A		-	-	4.25	4.64	5.00	-	6.49	7.99
Class 300	A		-	-	6.02	7.00	7.99	-	9.01	10.5
Class 600	A		-	-	6.49	7.51	8.50	-	9.48	11.5
Center to Top Open	Class 150/300	C	-	-	2.95	3.62	3.85	-	3.85	4.33
	Class 600	C	-	-	2.08	2.36	2.87	-	3.85	4.33
Dia. of Port		D	-	-	0.35	0.51	0.69	-	1.16	1.37
Weight	Class 150	Lb	-	-	6.40	7.0	9.50	-	14.3	31.9
	Class 300	Lb	-	-	7.90	9.2	13.2	-	26.4	35.2
	Class 600	Lb	-	-	9.00	10.4	13.8	-	28.6	37.4





CHECK VALVES

FORGED STEEL CHECK VALVES

HOW TO ORDER

VALVE TYPE				MATERIAL				ENDS	CLASS	SIZE
Body Design (Series)	Bonnet Design	Disc Design	FEATURES	BODY	TRIM (Hinge pin/Disc seat/Seat Ring)					
72 Check Valve API 602	B Bolted Bonnet	W Swing Check	NONE Std. Port	20 A105	01 13CR	F Flanged RF ⁽¹⁾ R Flanged RTJ ⁽¹⁾ T Threaded S Socket Weld B Butt Weld M 2 Different Ends (to be specify)	0 ANSI 150# 3 ANSI 300# 6 ANSI 600# 8 API 800# 1 ANSI 1500# 2 ANSI 2500#	0.5 1/2" 0.75 3/4" 01 1" 01.25 1 1/4" 01.5 1 1/2" 02 2"		
			6D API 6D	22 A350 LF2	02 304SS					
	W Welded Bonnet	I Piston Pressure Check	N NACE	23 A350 LF3	03 310SS					
			ND NACE/API 6D	24 A182 F1	05 13CR / HF / HF					
	P Pressure Seal	T Piston Spring Check	F Fire Safe	25 A182 F11 CL2	06 13CR / 13CR / CuNi					
			O Oxygen Service	26 A182 F22 CL3						
	B Ball Spring Check	B Ball Spring Check	FP Full Port	27 A182 F5	08 13CR / 13CR / HF					
			G Fire Safe / NACE	28 A182 F9						
				30 A182 F316	09 Monel					
				31 A182 F316L	10 316SS					
				32 A182 F304	11 Monel / Monel / HF					
				33 A182 F304L	12 316SS / 316SS / HF					
				40 Monel	13 CN7M					
				41 182 F20	14 CN7M / CN7M / HF					
				42 Hastelloy						
				43 A182 F321	15 A105/HF/HF					
			44 A182 F347	16 316SS + HF / 316SS+ HF / 316SS +HF						

Example

Piston Check Valve API 602, Bolted Bonnet, Body A105, Trim 5, Flanged ANSI Class 150#, Size 2"

72BI-2005-F802

(1) Flanged Valves are flange welded (non integral body) available from 1/2" to 2"

ANSI Class 150 to 600# only

****HF = Usually Stellite 6 other available under request

ANSI Class 150 to 600# only

