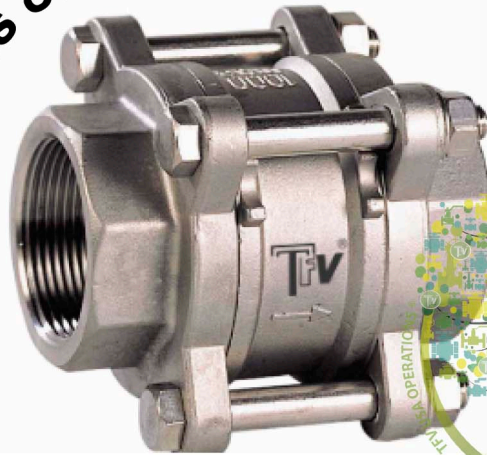


# CHECK VALVES

## THREE PIECES SPRING LOADED CHECK VALVE

Series 87TL

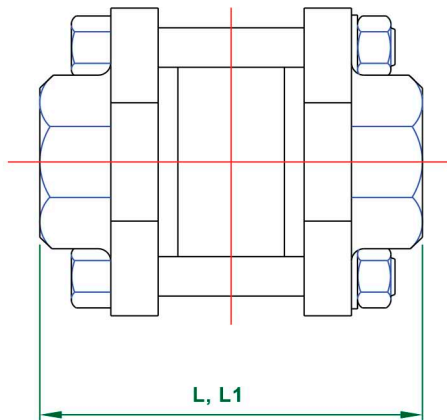


### FEATURES

- INVESTMENT CAST COMPONENTS
- HORIZONTAL OR VERTICAL INSTALLATION
- HIGHEST DEGREE OF TIGHTNESS
- LIGHT WEIGHT, LOW PRESSURE DROP
- FOR FOOD, GENERAL CHEMICAL AND INDUSTRIAL APPLICATION
- ASTM ASME B16.34, ANSI B16.25, API 598, EN 10213
- EN 12516, EN 12266
- END CONNECTION: SW, THREADED & BW
- FACE TO FACE: MFG. STANDARD
- WORKING PRESSURE: 40 BAR (CWP)
- TEMPERATURE RANGE: - 4 TO 356 F
- PRESSURE TESTING ACCORDING TO API 598 OR EN 12266

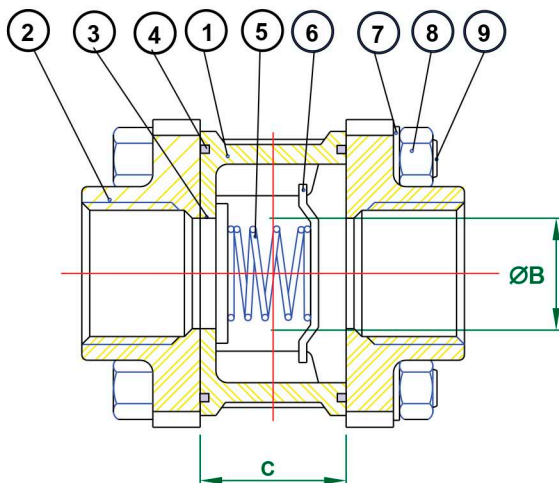
### MATERIAL LIST

No.	PART NAME	MATERIAL
1	BODY	CF8M
2	END CAP	CF8M
3	DISC	SS 316
4	BODY SEAL	R-PTFE
5	SPRING	SS 300
6	SPRING HOLDER	SS 316
7	WASER	SS 304
8	NUT	SS 304
9	BOLT	SS 304



L: SCREW & SOCKET END.

L1: BUTTWELD END.



### DIMENSION (INCHES)

SIZE	ØB	L	L1	C	WEIGHT (LBS)
1/4"	0.4	2.2	2.4	0.6	1.4
3/8"	0.4	2.2	2.4	0.6	1.4
1/2"	0.6	2.6	2.6	0.7	1.4
3/4"	0.7	2.8	3.1	0.9	1.3
1"	1.0	3.1	3.5	1.1	1.7
1 1/4"	1.2	3.8	3.8	1.3	2.6
1 1/2"	1.4	4.0	4.2	1.5	3.6
2"	1.9	4.6	5.0	1.9	5.1
2 1/2"	2.5	5.7	5.9	1.9	11.1
3"	3.0	6.1	6.7	2.2	17.2
4"	3.9	7.3	8.5	2.8	34.6



# CHECK VALVES

## THREE PIECES SPRING LOADED CHECK VALVE

### HOW TO ORDER

CLASS	SERIES	BODY	MATERIAL		ENDS	SIZE	
	VALVE BODY DESIGN		TRIM	SEAT			
8 800# CWP	7TL 3 PCS SPRING LOADED CHECK VALVE	3 CF8M	3 316SS	3 316SS	T THREADED	0.25	1/4"
						0.38	3/8"
						0.5	1/2"
						0.75	3/4"
						1	1"
						01.25	1 1/4"
						01.5	1 1/2"
						02	2"
						02.5	2 1/2"
						03	3"
04	4"						
					S SOCKET WELD		

### Example

3 Pcs Spring Loaded Check Valve, Body ASTM A351 Gr. CF8M & Disc 316SS, Seat PTFE, Threaded, Maximum Working Pressure 800# CWP, Size 2".

**87TL333T02**

